

### Specification

Nominal Voltage	12V	
Nominal Capacity(20HR)	60.0AH	
Dimension	Length	259±3mm (10.2 inches)
	Width	168±2mm (6.61 inches)
	Container Height	190±2mm (7.48 inches)
	Total Height (with Terminal)	190±2mm (7.48 inches)
Approx Weight	Approx 19.7 kg (43.4lbs)	
Terminal	T6	
Container Material	ABS	
Rated Capacity	60.0 AH/3.00A	(20hr, 1.80V/cell, 25°C/77°F)
	55.4 AH/5.54A	(10hr, 1.80V/cell, 25°C/77°F)
	48.55 AH/9.71A	(5hr, 1.75V/cell, 25°C/77°F)
	42.9 AH/14.3A	(3hr, 1.75V/cell, 25°C/77°F)
	35.6 AH/35.6A	(1hr, 1.60V/cell, 25°C/77°F)
Max. Discharge Current	600A (5s)	
Internal Resistance	Approx 8.2mΩ	
Operating Temp. Range	Discharge	-20~55°C (-4~131°F)
	Charge	0~40°C (32~104°F)
	Storage	-20~50°C (-4~122°F)
Nominal Operating Temp. Range	25±3°C (77±5°F)	
Cycle Use	Initial Charging Current less than 12A. Voltage	
	14.4V~15.0V at 25°C(77°F)Temp. Coefficient -30mV/°C	
Standby Use	No limit on Initial Charging Current Voltage	
	13.5V~13.8V at 25°C(77°F)Temp. Coefficient -20mV/°C	
Capacity affected by Temperature	40°C (104°F)	103%
	25°C (77°F)	100%
	0°C (32°F)	86%
Self Discharge	Leoch LPCG series batteries may be stored for up to 9 months at 25°C(77°F) and then a freshening charge is required. For higher temperatures the time interval will be shorter.	



### Applications

- ◆ Railway and marine systems
- ◆ Electric tools
- ◆ Vehicle in place of walking
- ◆ Lawn mowers
- ◆ Golf trolleys and golfcart
- ◆ Electric toys
- ◆ Portable power
- ◆ Wheelchairs
- ◆ Medical equipments.



### Constant Current Discharge (Amperes) at 25 °C (77°F)

F.V/Time	10min	15min	20min	30min	45min	1h	2h	3h	4h	5h	6h	8h	10h	20h
1.85V/cell	67.8	58.7	52.8	42.0	32.0	26.7	16.8	12.6	10.3	8.86	7.68	6.20	5.26	2.93
1.80V/cell	81.5	67.9	60.1	46.8	35.9	29.7	18.2	13.6	11.1	9.41	8.15	6.54	5.54	3.00
1.75V/cell	94.5	77.3	66.8	51.0	38.3	31.4	19.1	14.3	11.5	9.71	8.41	6.70	5.62	3.04
1.70V/cell	105.0	84.1	71.6	54.0	40.0	32.8	20.0	14.7	11.8	9.98	8.64	6.85	5.71	3.09
1.67V/cell	112.4	88.4	74.7	56.1	41.6	34.0	20.6	15.2	12.1	10.2	8.81	6.95	5.80	3.13
1.60V/cell	122.5	94.6	79.9	59.4	43.9	35.6	21.3	15.7	12.5	10.5	9.01	7.05	5.89	3.16

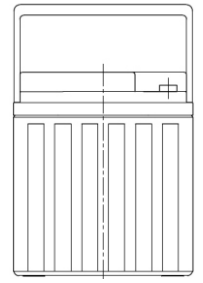
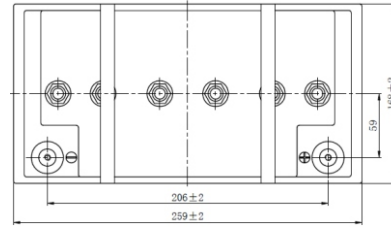
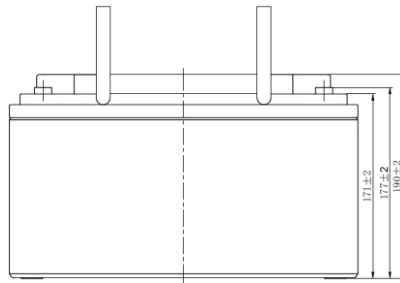
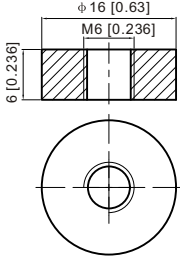
### Constant Power Discharge (Watts) at 25 °C (77°F)

F.V/Time	10min	15min	20min	30min	45min	1h	2h	3h	4h	5h	6h	8h	10h	20h
1.85V/cell	127.4	111.2	100.8	80.8	61.9	51.9	32.7	24.7	20.3	17.4	15.2	12.3	10.5	5.85
1.80V/cell	150.8	126.6	113.1	89.1	69.0	57.4	35.3	26.5	21.6	18.5	16.1	13.0	11.0	5.99
1.75V/cell	172.3	142.4	124.5	96.3	73.1	60.5	36.9	27.7	22.5	19.0	16.5	13.2	11.1	6.07
1.70V/cell	188.6	153.5	132.5	101.4	76.1	62.9	38.6	28.6	23.0	19.5	17.0	13.5	11.3	6.16
1.67V/cell	199.6	159.5	137.0	104.6	78.6	64.8	39.5	29.3	23.5	19.9	17.3	13.7	11.5	6.22
1.60V/cell	213.7	168.2	145.1	109.7	82.4	67.5	40.7	30.1	24.1	20.4	17.6	13.9	11.6	6.27

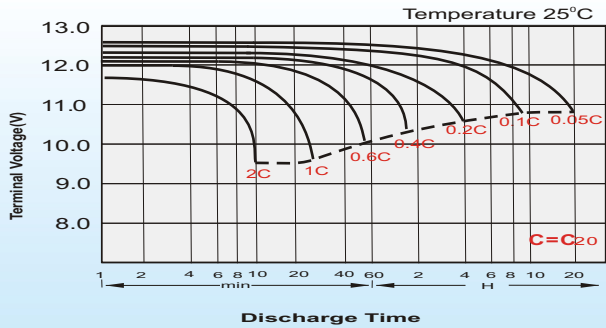
## Dimensions

### T6 Terminal

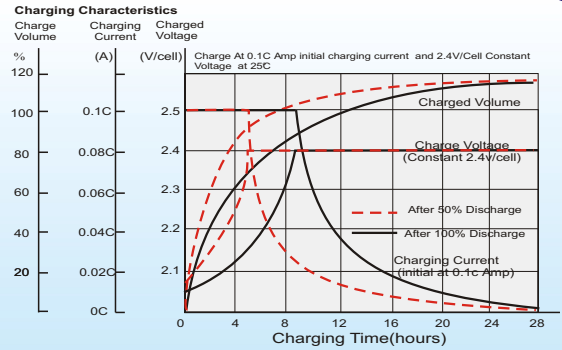
Unit: mm [inches]



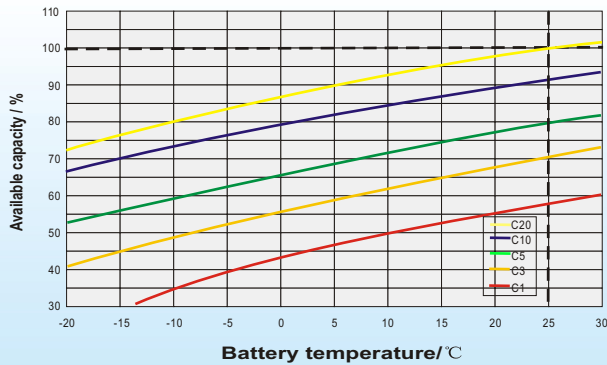
## Discharge Characteristics



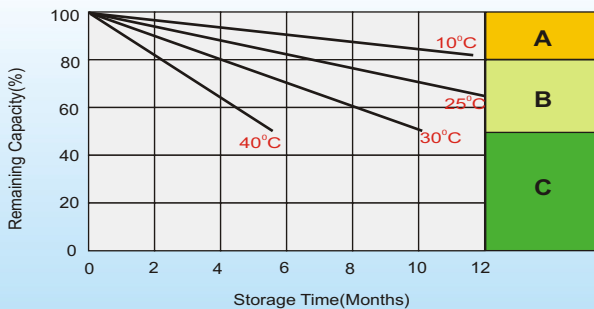
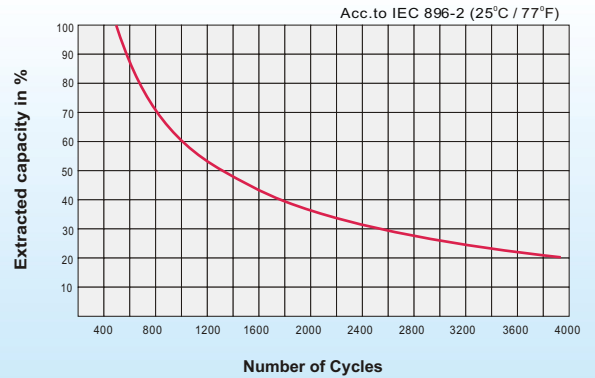
## Charging Characteristics (cycle use)



## Temperature Effects in Relation to Battery Capacity



## Cycle Life in Relation to Depth of Discharge



## Self Discharge Characteristics

**A**

No supplementary charge required  
(Carry out supplementary charge before use if 100% capacity is required.)

**B**

Supplementary charge required before use. Optional charging way as below:  
1. Charged for above 3 days at limited current 0.25CA and constant volatge 2.25V/cell.  
2. Charged for above 20hours at limited current 0.25CA and constant volatge 2.45V/cell.  
3. Charged for 8~10hours at limited current 0.05CA .

**C**

Supplementary charge may often fail to recover the capacity.  
The battery should never be left standing till this is reached.

## Sales Office

### China sales office:

Add: 5th Floor, Xinbaohui Bldg., Nanhai Blvd.,  
Nanshan, Shenzhen, China. 518052  
Tel: +8 6-755-36036060 (100 lines)  
Fax: +86-755-26067269  
E-mail: export@leoch.com  
Http://www.leoch.com

### North America sales office:

Add: 19751 Descartes, Unit A,  
Foothill Ranch, CA 92610, USA  
Tel: 949-588-5853  
Fax: 949-588-5966  
E-mail: sales@leoch.us  
Http://www.leoch.us

### Europe sales office:

Add: 9B Wheatstone Park, Waterwells  
Business Park, Gloucester, GL2 2AQ. UK.  
Tel: +44(0) 01452 729428  
Fax: +44 (0)1452-690125  
E-mail: Sales.Europe@leoch.com

### Singapore sales office:

Add: No.53, Ubi Avenue 1, #03-21 Paya  
Ubi Industrial Park, Singapore 408934  
Tel: + 65 6841 6629  
E-mail: sales.sg@leoch.com

### HongKong sales office:

Add: Unit 3910, 39/F, Cable TV Tower, No.9  
Hoi Shing Road, Tsuen Wan, NT.H.K  
Tel: +852 3578 6666  
E-mail: sales.hk@leoch.com